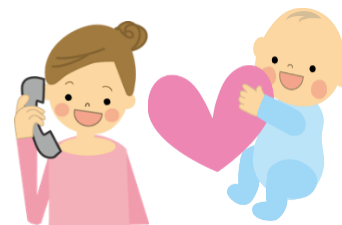


Do you have any questions about health and childcare ?



Information about Seta Sukoyaka Health Consultation Office

The Seta Sukoyaka Health Consultation Office provides consultation services about Health and Welfare to everyone from babies to elderly people.
Residents of Otsu City can receive free consultations.

If you would like to schedule a consultation with us, please send an email with the following contents.

Seta Sukoyaka Health Consultation Office Email address: otsu7210@city.otsu.lg.jp

<<Title>> <<Your name>> <<Your date of birth (YYYY/MM/DD)>> <<E-mail address>> <<Reason for consultation>>	<div style="border: 1px solid black; padding: 5px; text-align: center;"> Please send this content by email ! </div>
--	--

- *It may take several days to respond to your request depending on the issue.
- *If you have to specify a domain to receive emails, please enable the following domain to receive our emails.
Domain: city.otsu.lg.jp

◎Consultation Examples

- ☐Pregnancy, childbirth, and issuing of maternal and child health handbook.
- ☐Childcare, baby food, vaccinations, infant health and medical checkups.
- ☐General health and medical issues.

◎Office hours

Weekdays

AM 9:00 – 12:00

PM 1:00 – 5:00

Closed on weekends and national holidays (including 12/29-1/3).

*To prevent the spread of infectious diseases, consultations are by appointment only.

◎Location (See map below)

Zip code 520-2141

Address 3-2-1 Oe, Otsu city (in Seta City Branch Office)

